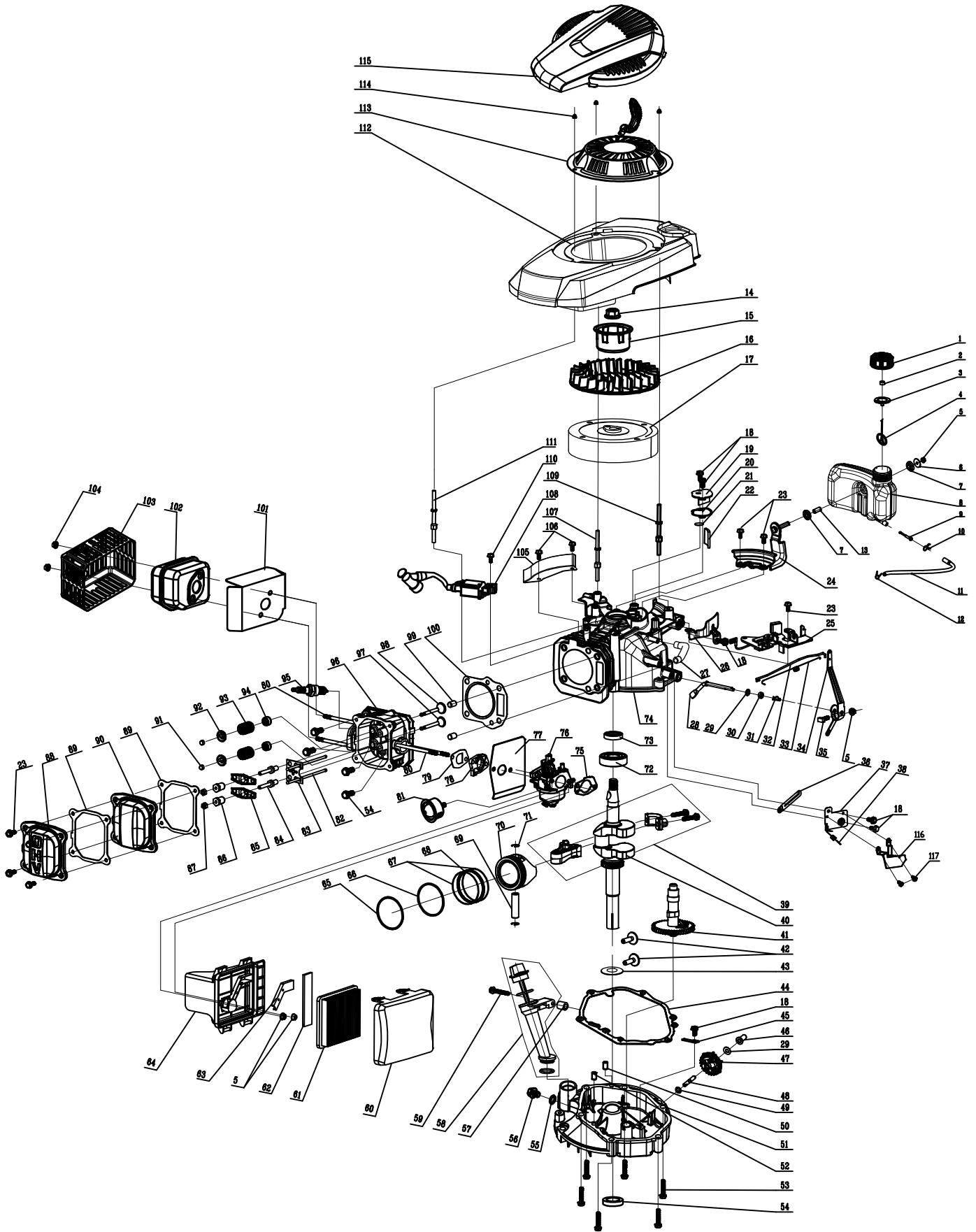


						宁波市德霖机械有限公司			
						固定刹车+快速扳手+H轮C盖 +半塑料草箱			
设计	校对	审核	工艺	批准	年月日	图号	数量	重量	比例
							1		
						共 1 页 第 1 页			
						S531VHY-TX			

<b>RPM 5355</b>			
<b>Pozice</b>	<b>Obj.číslo</b>	<b>Popis</b>	<b>Počet</b>
1	60100030000	Inch hex flange bolts	1
2	70040070000	blade washer	1
3	70130250000	blade	2
4	70140700000	Blade Adapter Assy	1
5	60060390000	Hexagon head bolts	1
6	60060180000	Hex flange bolts	6
7	20660210000	belt cover	1
8	70050120000	Brake Cable Assy plate	1
9	70741050130	deck welding assy.	1
10	60150080000	Self-locking nut	4
11	60060520000	Bolt	2
12	60410080000	Pull Spring for Pull Rod	1
13	70180360153	Height Adjustment Pull Rod	1
14	60300030000	R type pin	2
15	60060170000	Hex flange bolts	4
16	70070490000	Left Stent	1
17		petrol engine	1
18	20460030000	inlet	1
19	20460010000	inlet	1
20	60370020000	"O" ring	1
21	20590020000	cable stopper	1
22	60150060000	Self-locking nut	2
23	60200480000	flat Gasket	2
24	60170290000	Phillips flat head self tapping screw	8
25	60170800000	Cross recessed countersunk head screws	3
26	20100080000	bottom of grass box	1
27	60130010000	Cap nut	1
28	20160150000	mulching plug	1
29	70250180000	Board for Height Adjuster	1
30	70070500000	Left Stent	1
31	70030060000	Mulch Shaft	1
32	60390060000	mulch board spring	1
33	20120100000	mulching board	1
34	20110140000	side discharge cover	1
35	70060090130	Bracket plate for defelctor	1
36	60170580000	self tapping screw	6
37	20620210153	outer cover of hub	2
38	60150090000	Self-locking nut	12
39	70540083153	stop lever	1
40	20880320000	wheel assy.	2
41	20610070000	inner cover of hub	2
42	60180110000	Resilient washer	2
43	70840290000	front drive assy.	1
44	60320090000	v belt	1
45	60410610000	selfpropelled spring	1
46	70050230000	Brake spring	1
47	70860480000	selfpropelled assy.	1

48	60290070000	bratchet pin	2
49	20430030153	rear wheel axle sleeve	2
50	21070030000	selfpropelled ratchet washer	4
51	60240060000	spring washer	6
52	70300190000	Ratchet Wheel L	1
53	20430140000	rear wheel axle sleeve	2
54	70290200000	Displacement pressure plate after	2
55	70300200000	Ratchet Wheel L	1
56	20620230153	outer cover of hub	2
57	20880330000	wheel assy.	2
58	20610060000	inner cover of hub	2
59	60200090000	Gasket	2
60	70850770000	rear drive assy.	1
61	20270010153	height adjustment ball	1
62	20050120032	fabric grass bag	1
63	70010090000	fabric metal frame	1
64	60220010000	lock washer	2
65	70030540000	Shaft for rear discharge cover	1
66	60380240000	cover spring	1
67	20380090000	rear discharge cover	1
68	60170290000	Phillips flat head self tapping screw	8
69	70040100000	blade washer	4
70	20080090000	top of grass box	1
71	21010010153	filter net of grass bag	1
72	20340060130	foam pipe	1
73	70550100130	Self-propelled Lever	1
74	70500550031	upper handrail	1
75	20030030000	lever guard	1
76	60060590000	Bolt	3
77	70230090000	Hang buckle	1
78	60130020000	Cap nut	1
79	20580020153	quick fix knob	2
80	60300090000	type pin	2
81	70520210031	lower handrail	1
82	60060700000	bolt	4
83	20240020000	fastener	2
84	70220020000	Quick Fix Handle	2
85	70050180000	lock for fast fix handle	2
86	60190140000	flat washer	2
87	20040140153	triangle knob	2
88	60140080000	Hexagon nut	2
89	70810220000	brake cable	1
90	70780080000	selfpropelled cable	1
91	70050120000	Brake Cable Assy plate	1

TX加浓II汽油机定速带刹车新面罩爆炸图



						TX				宁波市德霖机械有限公司	
										加浓II汽油机(新面罩)	
标记	数量	分区	更改文件号	签名	年月日	规格标记	数量	重量	比例		
设计			标准化			S	1		1:5		
校对			审定								
审核											
工艺			批准								
						共 1 页 第 1 页				版本 A0	

<b>TX Engine Parts list</b>			
<b>Pozice</b>	<b>Obj.číslo</b>	<b>Popis</b>	<b>Počet</b>
1	25170110000	fuel tank cap	1
2	80010070000	fuel tank cap sponge	1
3	60440340000	Fuel Tank Cap seal gasket	1
4	25250010000	connect cable of fuel cap	1
5	60140020000	Hex flange nuts	4
6	60190310000	The oil tank mount big washer	1
7	25310030000	Tank damping rubber pad	2
8	25180230000	fuel tank body	1
9	25150010000	fuel oil screen pipe	1
10	60230020000	fuel pipe lock clamp I	1
11	25160020000	fuel pipe	1
12	60230010000	fuel pipe lock clamp II	1
13	60240250000	Fuel tank mounting bushing	1
14	60140050000	Hex flange nuts	1
15	75210020000	starter hub	1
16	25040120000	fan	1
17	75390250000	flywheel assy	1
18	60060520000	Bolt	6
19	75110010000	Respirator Cover Plate	1
20	75720160000	Respirator head gasket	1
21	75100030000	Respirator valve plate	1
22	75150010000	oil filter	1
23	60060530000	Bolt	7
24	75330060000	main bracket of fuel tank	1
25	75380080000	detent assy.	1
26	75030070000	wind shield	1
27	25030020000	waste pipe	1
28	75290010000	rate-limiting rocker arm shaft	1
29	60200490000	Gasket	2
30	60360080000	oil seal	1
31	60300040000	R type pin	1
32	75160030000	Handspike of Valve	1
33	60410050000	valve spring	1
34	75070030000	throttle rocker arm	1
35	60060730000	bolt	1
36	60450010000	clip	1
37	75360010000	single phrase throttle assy.	1
38	60410640000	throttle control spring	1
39	75460060000	connecting rod assy.	1
40	75510800000	crankshaft assy.	1
41	75470110000	camshaft assy.	1
42	75250010000	pin	2
43	60200180000	clockwise gear gasket	1
44	75720250000	Respirator head gasket	1
45	75280010000	rate-limiting gear shaft	1
46	25070010000	Sliding Sleeve	1
47	75520020000	rete-limiting gear assy.	1

48	75270030000	rate-limiting gear shaft	1
49	60200060000	Gasket	1
50	60280030000	spacing pin	1
51	75240150000	Crank box cover	1
52	60280050000	spacing pin	1
53	60050050000	locking bolt	10
54	60360100000	oil seal	1
55	60200150000	Oil drain bolt gasket	1
56	60061020000	Oil drain bolt	1
57	25200050130	Lubricating Gauge Assy	1
58	25080020000	Distance Sleeve of Lubricating Setting	1
59	60060630000	Bolt	1
60	25120010000	Air Filter Upper Cover	1
61	25300020000	Paper filter	1
62	25300010000	Coarse sponge filter	1
63	25020010000	Exhaust Gas Cover Board	1
64	25220010000	air filter base assy.(II)	1
65	75130110000	Piston Ring II	1
66	75130120000	Piston Ring II	1
67	75090050000	Guide Rail	2
68	75000060000	Bushing Ring	1
69	60310050000	piston pin	1
70	75120070000	Piston	1
71	60240110000	washer	2
72	60010140000	rolling bearing	1
73	60360120000	oil seal	1
74	75500140000	crankshaft box assy.	1
75	75730100000	Empty filter paper pad	1
76	75410610000	Carburetor	1
77	75730060000	Intake pipe paper pad II	1
78	25090020000	Air Inlet Pipe	1
79	75730050000	Intake pipe paper pad I	1
80	60080030000	Dual-head bolts	4
81	25210020130	prime button II	1
82	75350020000	push rod	2
83	75260020000	push rod director plate	1
84	60060760000	valve rocker arm support bolts	2
85	75230010000	Rocker of Valve	2
86	60160050000	Valve adjustment nut	2
87	60160030000	And nuts	2
88	75080030000	cylinder head cover II	1
89	75720270000	Respirator head gasket	2
90	75080020000	cylinder head cover I	1
91	75200010000	Top Cover of Exhaust Valve	2
92	75180020000	Spring Coil of Exhaust Valve	2
93	60380090000	valve spring	2
94	60360140000	oil seal assy	2
95	75140010000	spark plug	1
96	75490040000	cylinder head assy.	1
97	75190020000	Exhaust Valve	1

98	75170020000	IntakeValve	1
99	60280020000	spacing pin	2
100	75720110000	Cylinder head gasket	1
101	75740020000	Muffler insulating pad	1
102	75540150000	muffler assy.	1
103	75530030000	muffler cover assy.	1
104	60150100000	Self-locking nut	2
105	75030020000	wind shield	1
106	60060540000	Bolt	2
107	60080290000	Different-shaped double-head bolts II	1
108	75370032000	ignition assy.	1
109	60080210000	Dual-head bolts	1
110	60060590000	Bolt	1
111	60080300000	Different-shaped double-head bolts II	1
112	25190250000	The transparent cover	1
113	75430110000	pull starter assy.	1
114	60130020000	Cap nut	3
115	25190160153	The transparent cover	1